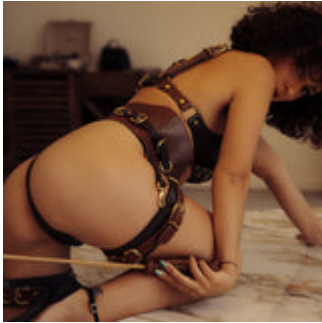


When it comes to it, there are many different approaches and viewpoints to consider [canes for bdsm](#).

When it comes to the world of BDSM, canes play a significant role in both pleasure and pain. Whether you are new to the scene or looking to expand your knowledge, understanding the role of canes in BDSM is essential for a fulfilling experience.



The History of Canes in BDSM

The use of canes in BDSM dates back centuries, with roots in various cultures and practices. In BDSM, canes are often used as a tool for impact play, where the dominant partner administers controlled strikes to the submissive partner's body. The sensation of being struck by a cane can range from a gentle tap to a more intense sting, depending on the preferences of those involved.

Exploring the Sensations

One of the key aspects of using canes in BDSM is the range of sensations they can produce. The thin, flexible nature of a cane allows for precise strikes, creating a sharp and focused sensation on the skin. This can be both exhilarating and intense for the submissive partner, heightening their experience and adding an extra layer of excitement to the scene.

For beginners, it's important to start with light strikes and gradually build intensity as you and your partner become more comfortable. Communication and trust are crucial when exploring the sensations of canes in BDSM, ensuring that both partners are on the same page and enjoying the experience.

Choosing the Right Cane

When selecting a cane for BDSM play, it's essential to consider factors such as material, length, and flexibility. Canes are commonly made from materials like rattan, bamboo, or fiberglass, each offering a different level of intensity and sensation. Longer canes provide a wider range for striking, while shorter canes offer more precision and control.

Flexibility is another important factor to consider, as it determines the impact and sensation of each strike. A more flexible cane will deliver a sharper sting, while a stiffer cane will produce a deeper thud. Experimenting with different types of canes can help you find the perfect fit for your preferences and play style.

Exploring Boundaries and Safety

As with any aspect of BDSM, it's crucial to prioritize safety and consent when incorporating canes into play. Before engaging in impact play with canes, it's important to establish safe words, boundaries, and signals to ensure that both partners feel comfortable and in control.

Additionally, taking the time to learn proper striking techniques and target areas can help minimize the risk of injury and ensure a safe and enjoyable experience for everyone involved. Open communication, trust, and a mutual understanding of each other's limits are essential for exploring the role of canes in BDSM.

Exploring the role of canes in BDSM can be a thrilling and intimate experience for both partners. By understanding the history, sensations, and safety considerations associated with canes, beginners can embark on a journey of exploration and discovery within the world of BDSM.

References

- [canes for bdsm](#)